

# BURGIN ATKINSON

& C O M P A N Y

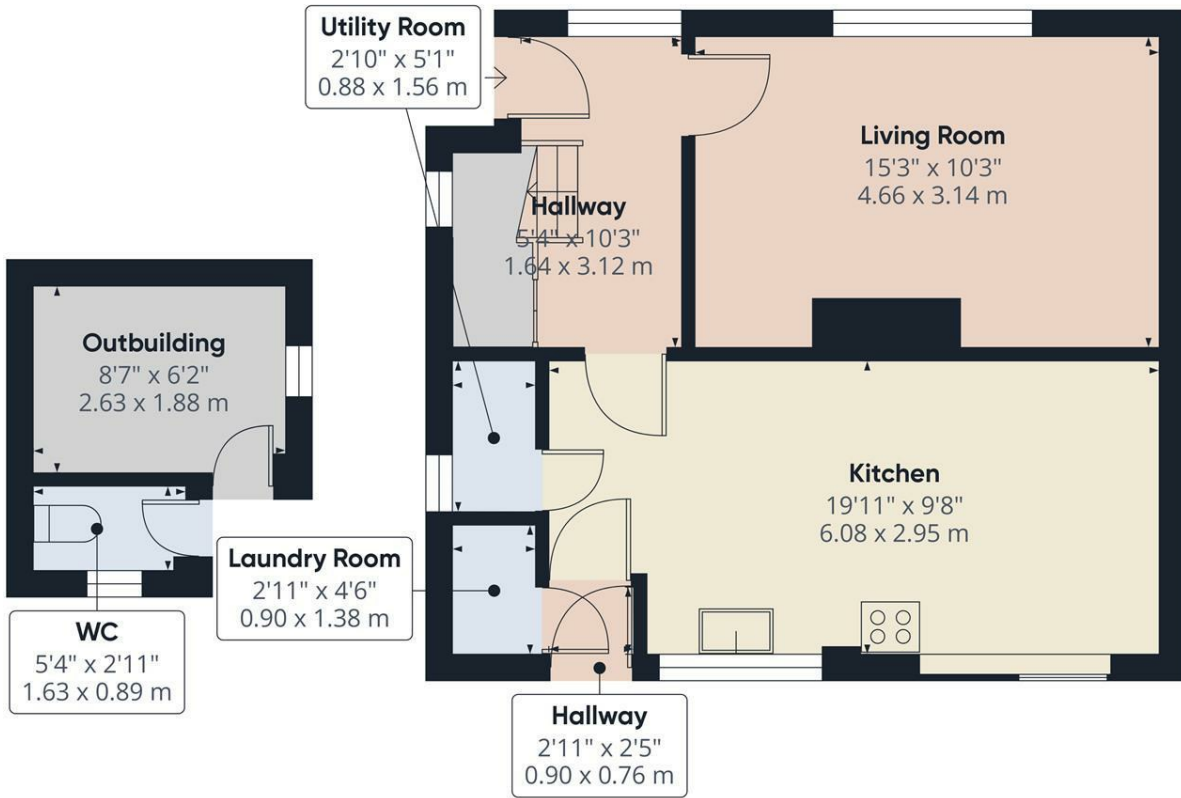


12 Sandringham Road, Retford, DN22 7QU

3 BEDROOM SEMI DETACHED HOME - IDEAL LOCATION - WELL PRESENTED THROUGHOUT - SPACIOUS KITCHEN DINER - MODERN BATHROOM - GREAT SIZED BEDROOMS - EXTENSIV FRONT AND REAR GARDENS - OFF STREET PARKING FOR TWO VEHICLES - EPC : D

- 3 Bedroom Semi Detached Home
- Spacious Open Plan Kitchen Diner
- Extensive Front + Rear Gardens
- Off Street Parking for 2 Vehicles
- Modern Bathroom
- Ideal Location

**£190,000**



Approximate total area<sup>(1)</sup>  
523.22 ft<sup>2</sup>  
48.61 m<sup>2</sup>

(1) Excluding balconies and terraces

While every attempt has been made to ensure accuracy, all measurements are approximate, not to scale. This floor plan is for illustrative purposes only.  
Calculations are based on RICS IPMS 3C standard.

GIRAFFE360

Ground Floor

